

# 30 Berkeley Square Mayfair, London

'Best of the best'  
Penthouse office floor  
c. 3,000 sq ft

Private wrap-around terracing with  
stunning views over Berkeley Square  
and Mount Street



---

Spacious.  
Contemporary.  
Sophisticated.  
World-class.  
Innovative.  
Stylish.  
Premium.  
Glamorous.  
Panoramic.  
Prestigious.  
Distinguished.  
Historical.  
**Art.**  
**Design.**  
**Culture.**

---

# Mayfair's finest penthouse office floor, the most exclusive 'art house' office building in London.

Penthouse Office Floor,  
30 Berkeley Square  
Mayfair, London

The award winning, international architectural firm Aukett Fitzroy Robinson, responsible for projects such as the conversion of The Lanesborough Hotel and the restoration of the courtyard of The Royal Exchange in London, has designed the auction, gallery and office spaces.

The building was constructed in the 1990s on a prominent location in Mayfair, at the intersection of Davies Street and Mount Street, overlooking Berkeley Square across the road from the new Chanel HQ and Blackstone's new headquarters on the South side.

Full height glazing has been incorporated into the 7<sup>th</sup> floor, penthouse office space.

---

# Specifications.

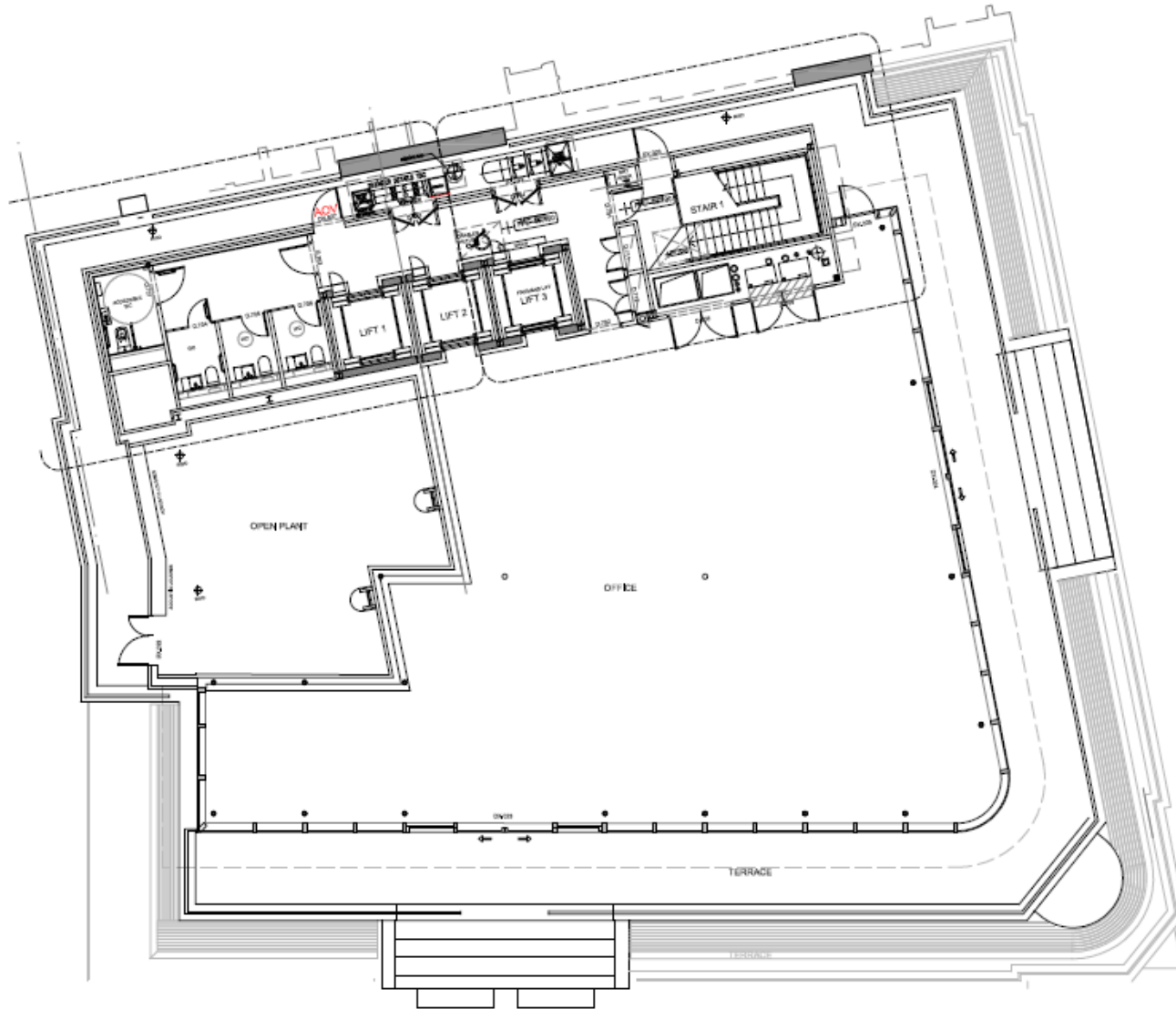
Penthouse Office Floor,  
30 Berkeley Square  
Mayfair, London

- Penthouse office floor with panoramic views across London.
- Wrap-around terracing.
- Prestigious Mayfair London address.
- 24 hour access and security.
- Professional receptionists.
- Full height windows.
- Shower facilities and changing rooms. Cycle spaces.
- WC facilities on each floor.
- CAT-A fit-out.

# The Penthouse, 7<sup>th</sup> floor.

c. 3,000 sq ft

Penthouse Office Floor,  
30 Berkeley Square  
Mayfair, London



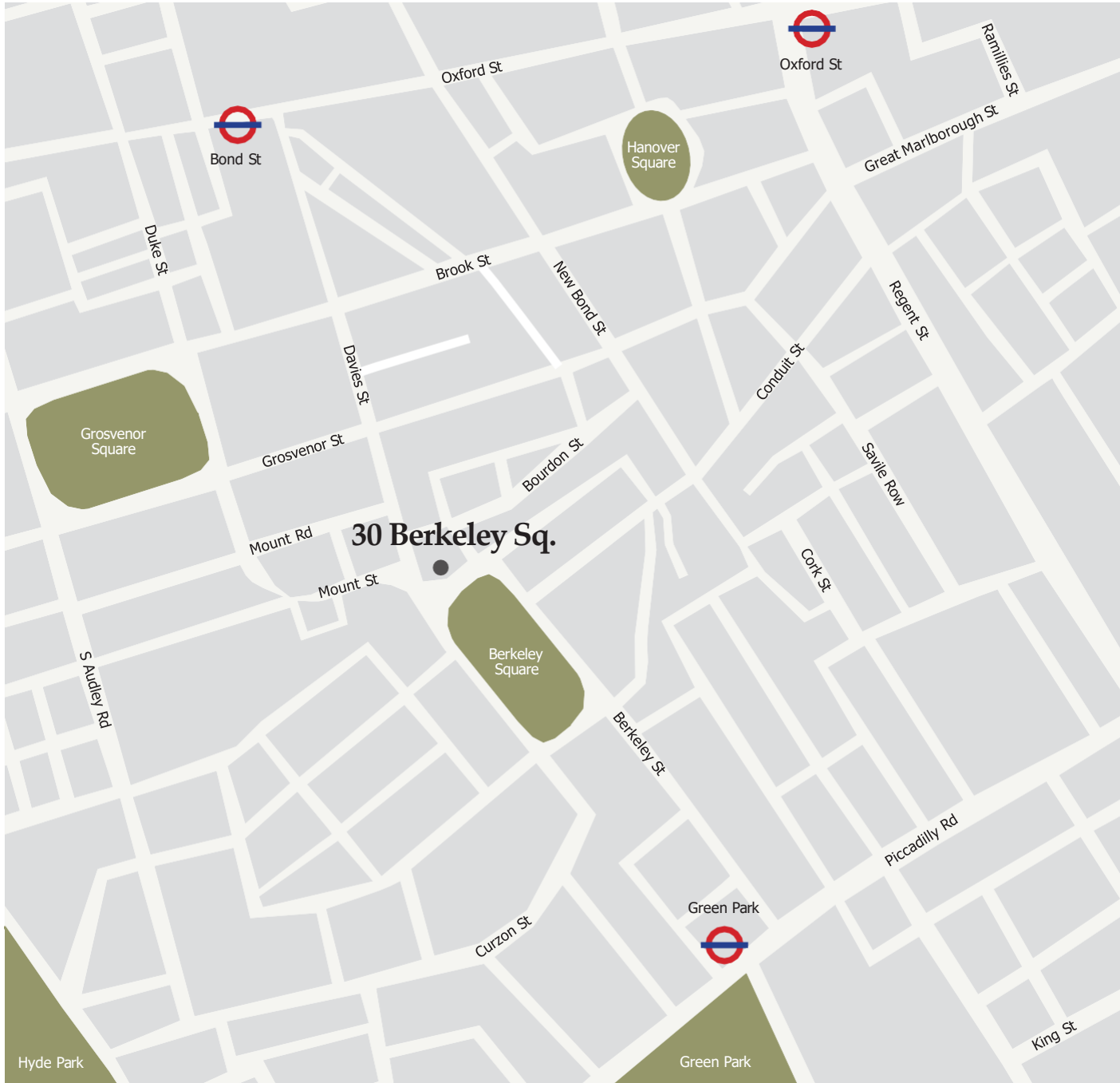
views to Berkeley Square

views to Mount Street

for identification purposes only

# Location.

Penthouse Office Floor,  
30 Berkeley Square  
Mayfair, London



# The Penthouse, 7<sup>th</sup> floor office space

Penthouse Office Floor,  
30 Berkeley Square  
Mayfair, London



# Panorama.

Penthouse Office Floor,  
30 Berkeley Square  
Mayfair, London



# The Penthouse, office floor – c. 3,000 sq ft

Penthouse Office Floor,  
30 Berkeley Square  
Mayfair, London



# Rent

Upon Application.

# Lease

For a term by arrangement, contracted outside the 1954 L&T Act.

# Legal Costs

Each party to bear their own legal costs incurred in this transaction.

# Possession

upon completion

sole agent:



David Rosen Hon FRIBA

[davidrosen@pilcher.london](mailto:davidrosen@pilcher.london)

T: 020 7399 8600

M: 07801 526 711

Julian Wogman

[julianwogman@pilcher.london](mailto:julianwogman@pilcher.london)

T: 020 7399 8600

M: 07904 337664

Pilcher London on their behalf and for the Lessor of this property whose Agents they are, give notice that:

1. These particulars are set out as a general outline only for guidance to intending Lessees, and do not constitute any part of an offer or contract.
2. Whilst they have used reasonable endeavours to ensure that the information in these particulars is materially correct, any intending Lessees or Third Parties should not rely on them as statements or representations of fact, but must satisfy themselves by inspection, searches, enquiries, surveys or otherwise as to their accuracy. The Agents as such cannot be held responsible for any loss or damage including without limitation, indirect or consequential loss or damage, or any loss of profits resulting from direct or indirect actions based upon the content of these particulars.
3. No person in the employment of Pilcher London has any authority to make any representation or warranty whatsoever in relation to this property.
4. Unless otherwise stated, all rents are correct at the date of publication and, unless otherwise stated, are quoted exclusive of VAT. Lease details and service charges are given as a guide only and should be checked and confirmed by your solicitor prior to exchange of contracts."