

PILCHER●LONDON

bespoke commercial property consultants

1-6 pratt mews camden, nw1

for rent / lease

1,603 sq ft

an industrial chic style stylish self
contained space with its own
entrance



www.pilcher.london | 0207399 8600

● 1-6 pratt mews, camden, nw1

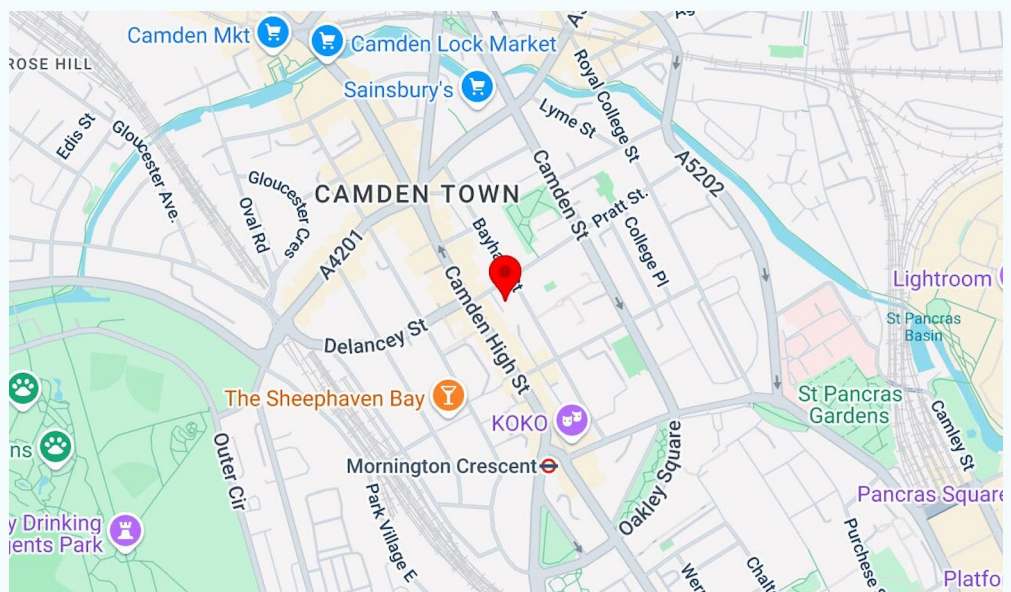


about

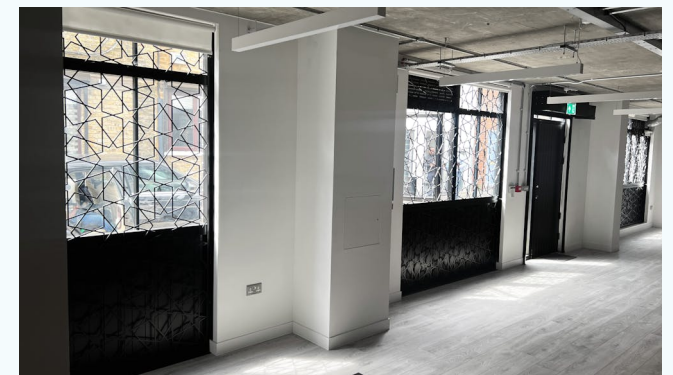
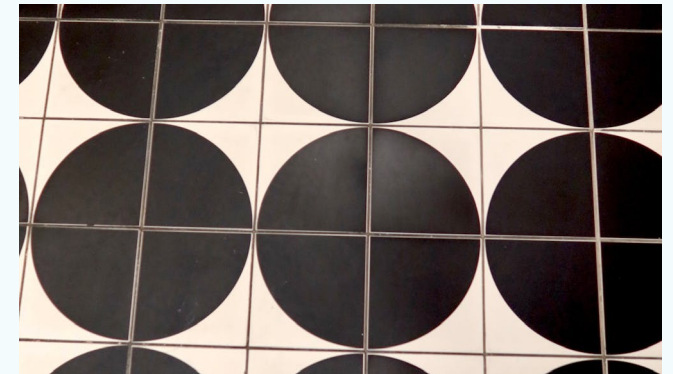
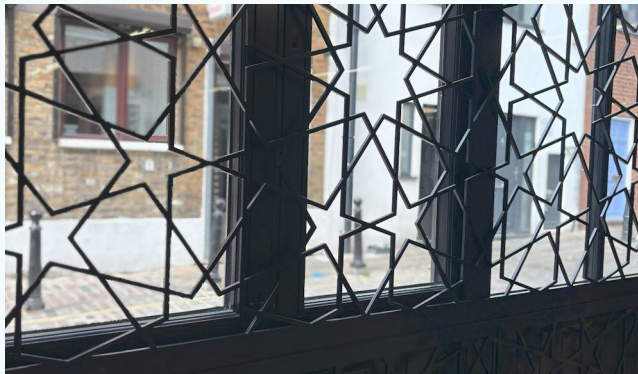
former home to earnest moy and percy bastie who moved in to set up their radical electronics company, filing scores of patents for their inventions. one would change the world of entertainment forever and is widely recognised as the world's first kine camera from this site.

location

situated equal distance between camden underground station and mornington crescent underground station in the heart of camden where there are a number of trendy bars, restaurants and cafes as well as the iconic koko.



● 1-6 pratt mews, camden, nw1



● 1-6 pratt mews, camden, nw1

accommodation

the accommodation comprises the following areas:

name	sq ft	sq m	availability
ground	1,603	148.92	available
total	1,603	148.92	

● 1-6 pratt mews, camden, nw1

amenities

- self contained with own entrance
- exposed high concrete ceilings
- good natural light
- fully fitted kitchen
- exposed air conditioning
- architecturally designed lighting
- eric broug art installation
- alarm
- large demountable partitioned meeting room
- shower

financials

rent	£40 per sq ft
rates payable	£22.50 per sq ft
service charge	n/a

legal fees

each party to bear their own costs

lease

new lease

possession

available immediately

● 1-6 pratt mews, camden, nw1

PILCHER ● LONDON

bespoke commercial property consultants



viewings & more information

taylor rosen

020 7399 8610 | 07834 789 346

taylorrosen@pilcher.london

simon rinder

020 7399 8611 | 07734 488 286

simonrinder@pilcher.london