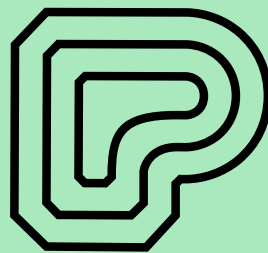




THE
PIANO
FACTORY



Perren Street, Kentish Town NW5
1,408 sq ft - 11,337 sq ft



11,337 sq ft of offices to let, set within an industrial-chic style warehouse conversion, located within close proximity of the newly refurbished Kentish Town West and Kentish Town stations.



STRIKING WAREHOUSE CONVERSION WITH ORIGINAL INDUSTRIAL FEATURES



Floor	Sq Ft	Sq M	Condition
4th – Total	1,820	169	-
3rd – Total	3,262	303	-
3rd (North)	1,544	143	-
3rd (South)	1,718	160	-
2nd – Total	3,283	305	Cat A+
2nd (North)	1,558	145	Cat A+
2nd (South)	1,725	160	Cat A+
1st – Total	3,242	301	-
G – Total	3,242	301	-
G (South)	1,408	131	Cat A+
G (North)	1,507	140	-
LGF – Total	1,564	145	-

SPECIFICATION

-  Air Conditioning
-  Terrace
-  Lift
-  Raised Floors
-  Showers
-  Newly fitted Cat A+ floors
-  Cycle Facilities
-  Refurbished
-  Exposed Beams & Brickwork
-  Architecturally Designed Staircase



NEWLY FITTED CAT A+ FLOORS



THE BUILDING

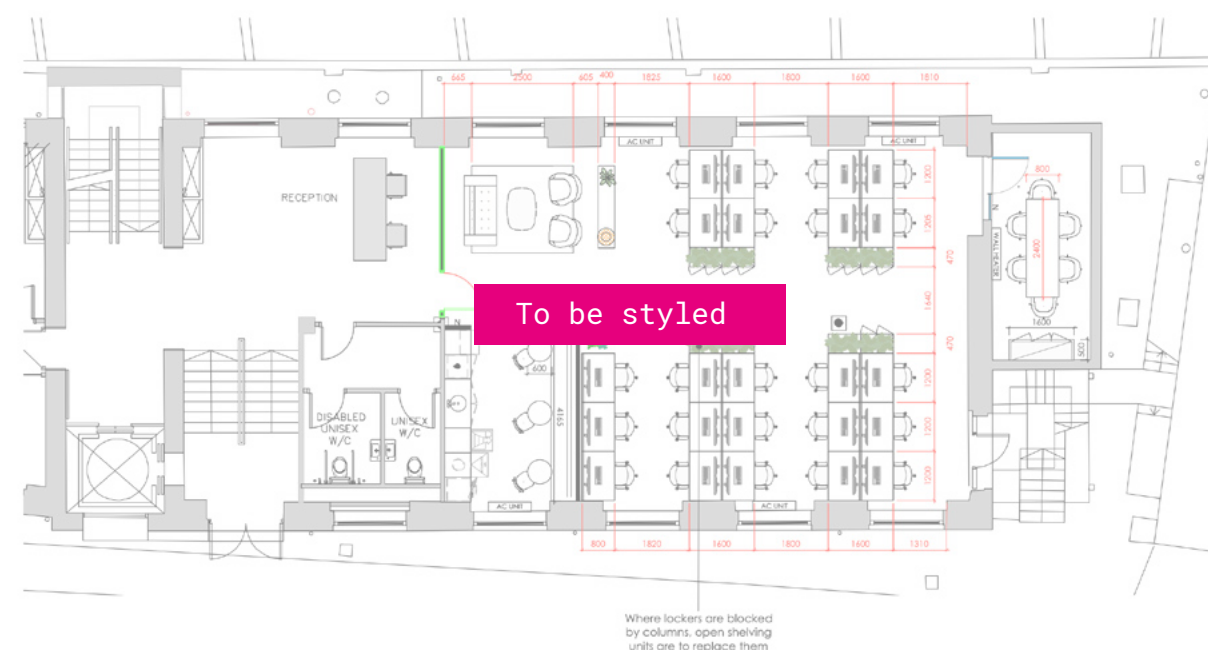
2ND FLOOR

3,283 sq ft | 305 sq m



GROUND FLOOR SOUTH

1,408 sq ft | 131 sq m



THE PIANO FACTORY

FORMER PIANO FACTORY BENEFITTING FROM VOLUME, LIGHT & CHARACTER

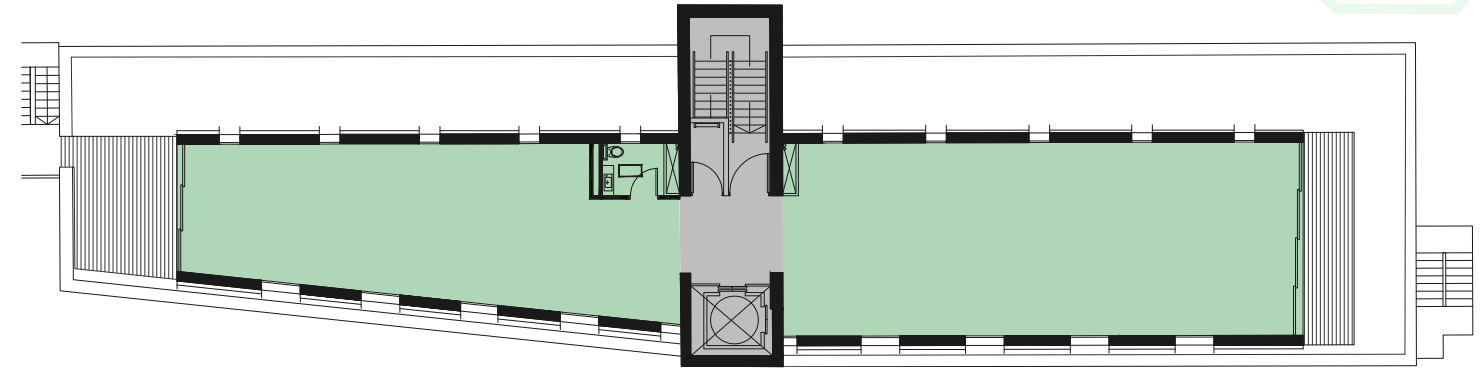
The Piano Factory offers refurbished warehouse accommodation on the lower ground, part ground and 2nd to 4th floors.

The building provides characterful open plan office space and a lower ground break out area.



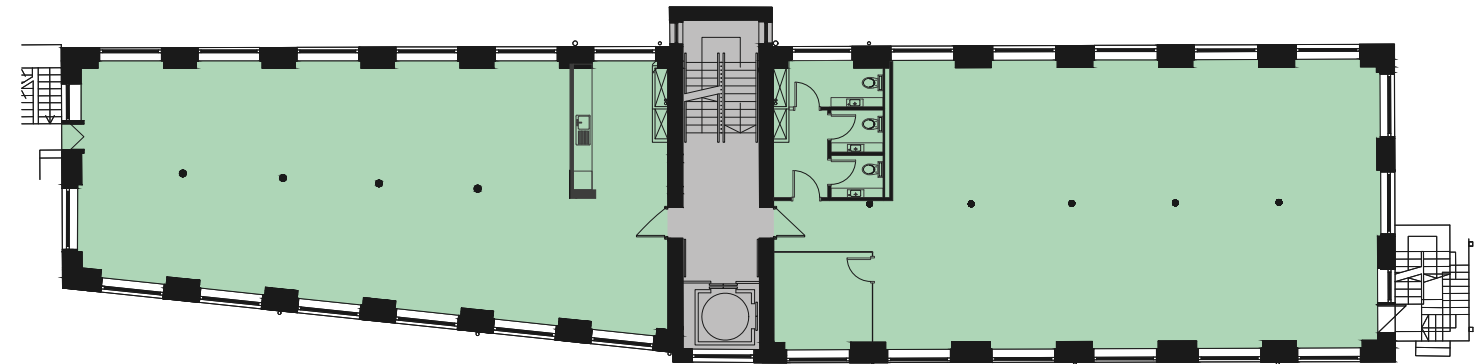
4TH FLOOR

1,820 sq ft | 169 sq m



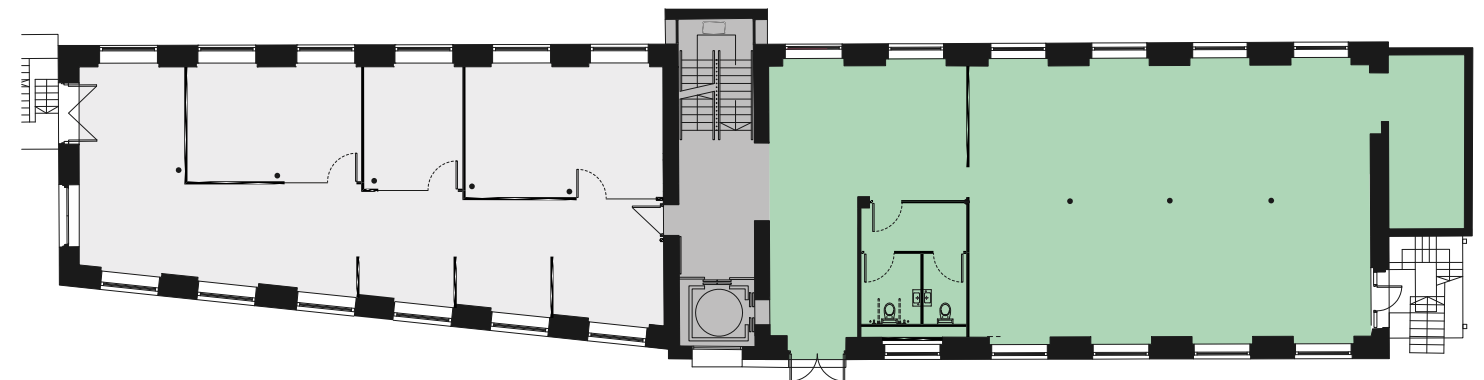
TYPICAL UPPER

3,283 sq ft | 305 sq m



GROUND (SOUTH)

1,408 sq ft | 131 sq m





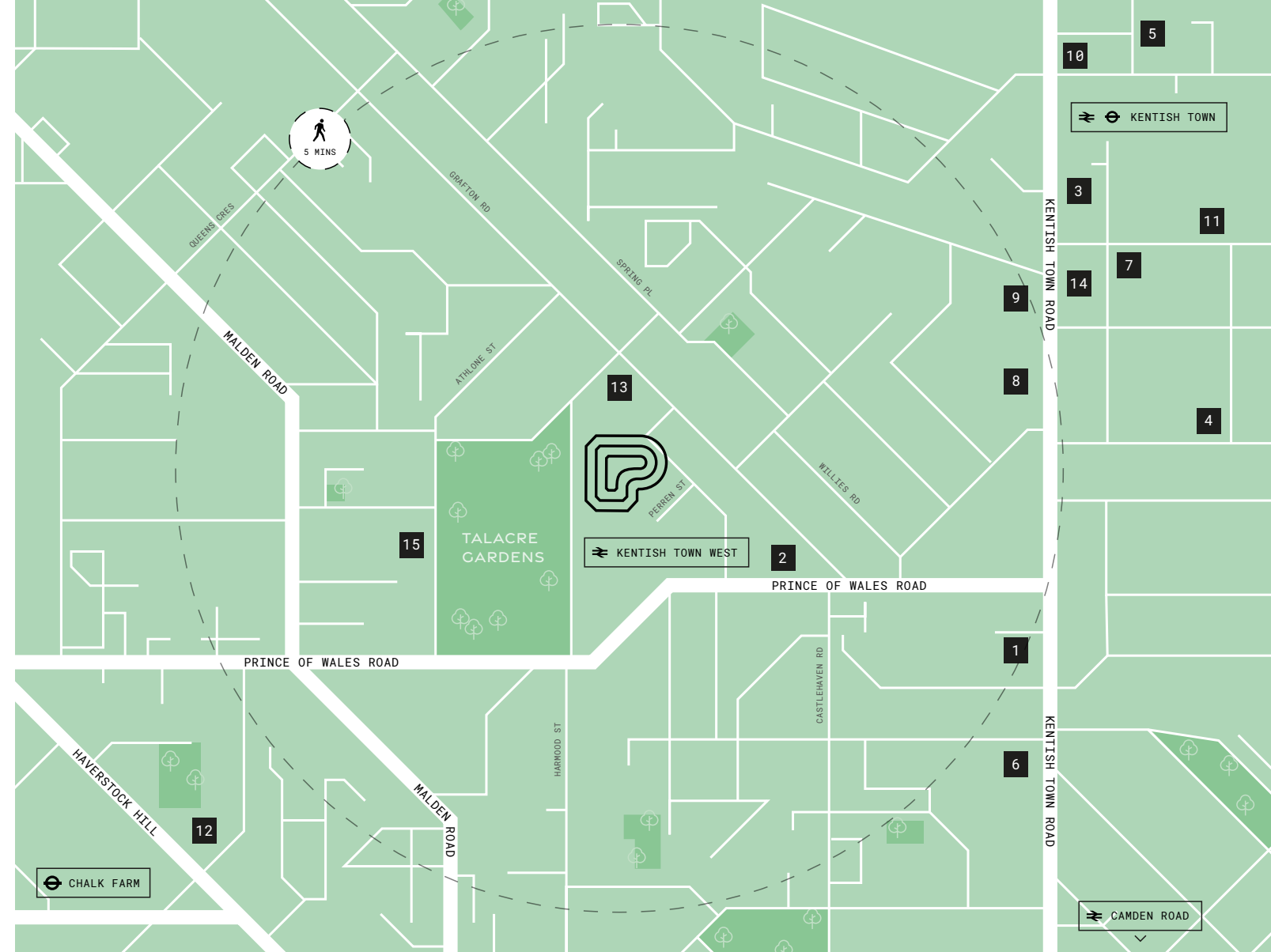
IN THE HEART OF KENTISH TOWN, ONE OF LONDON'S MOST VIBRANT AREAS.



1. Albion's Restaurant
2. Kentish Town Street Art
3. Boma Garden Centre
4. Camden Town Brewery
5. Kentish Town West Station



THE LOCATION



DRINK

1. Doppio Coffee
2. The Fields Beneath
3. Knowhere Special
4. The Lion and Unicorn
5. The Pineapple

DINE

6. Albion's
7. The Parakeet
8. Bengal Lancer
9. E. Mono
10. Patron

UNWIND

11. Boma Garden Centre
12. In Motion
13. Lunar Cycles
14. The Form Room
15. St Pancras Boxing Club

TRAVEL TIMES



06 mins	King's Cross
10 mins	Farringdon
15 mins	Tottenham Court Road
20 mins	Waterloo
21 mins	Old Street
25 mins	Dalston Junction
36 mins	Shepherd's Bush

THE PIANO FACTORY

travel times from [google.com/maps](https://www.google.com/maps)



THEPIANOFACTORY.CO.UK



BRIAN ALLEN

07972 000 215

bmallen@savills.com

KIAN KELLY

07890 903 968

kian.kelly@savills.com



SIMON RINDER

07734 488 286

simonrinder@pilcher.london

JAMES FAUSTINO

07834 789 346

jamesfaustino@pilcher.london