

stylishly refurbished self-contained e class office building

the coach works, 2 munden street, kensington, w14

c.4,700 sq ft for rent, possibly for sale

full of charm, character and light



located off kensington high street and around the corner from olympia where the acclaimed architect thomas heatherwick has created a commercial masterpiece, the building was originally converted by jiricna kerr in 1987 but has recently been fully refurbished to a cat a finish by chase architects / sebastian conran to a high standard of specification and finish.

previous occupiers include tom dixon, kelly hoppen, jasper conran and eva jiríčná to name a few. close by stations include olympia (overground & district line), barons court (picadilly and district line), or hammersmith (district, circle and hammersmith & city).

PILCHER LONDON

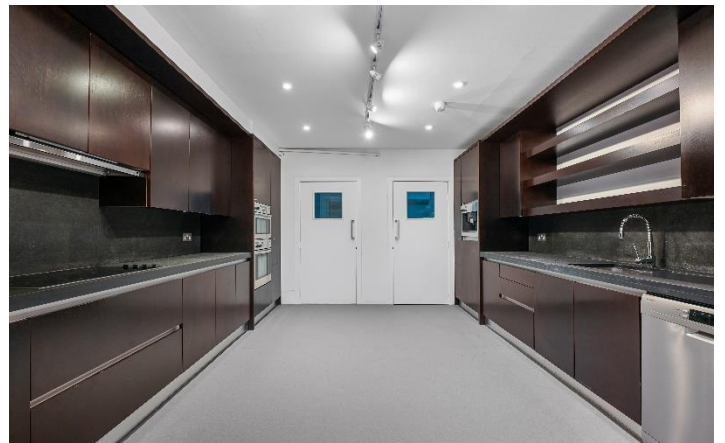
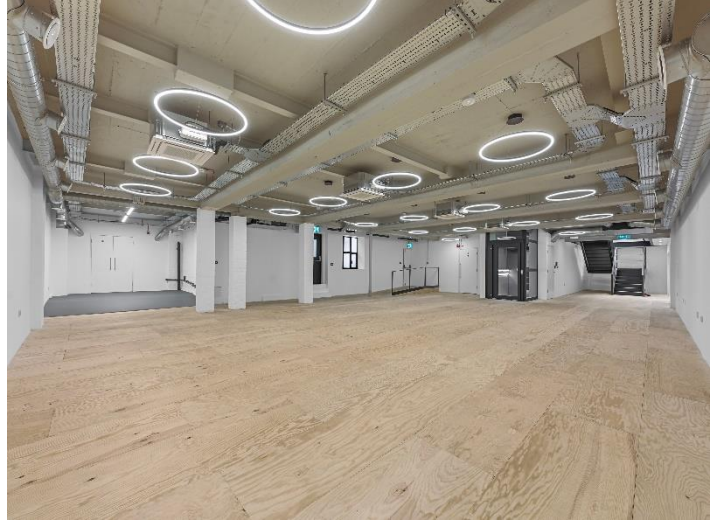
8600

227399

TELEPHONE

FIRST FLOOR 10 GOLDEN SQUARE LONDON W1F 9JA T 020 7399 8600 www.pilcher.london

Misrepresentation Act. These descriptions and measurements do not form part of any contract and whilst every effort has been made to ensure accuracy this cannot be guaranteed.



accommodation

lower ground	2,400 sq ft
ground	1,216 sq ft
first	1,044 sq ft
total	4,660 sq ft

amenities

- self-contained building
- good natural light
- sky lights
- solar panels
- stylish metal staircase
- exposed beams and retained feature
- platform lift
- air conditioning
- w/c facilities
- showers and bike storage
- fully fitted kitchenette
- EPC A
- heat pumps
- heat exchangers that meet the anticipated 2030 building regs
- fully accessible

rent

c.£225,000 per annum exclusive

lease

by arrangement

legal costs

each party to bear their own legal costs

possession

upon completion

PILCHER LONDON

020 7399 8600

TELEPHONE

viewings

via sole agent's

james faustino

jamesfaustino@pilcher.london

07834 789 346

simon rinder

simonrinder@pilcher.london

07734 488 286

david rosen

davidrosen@pilcher.london

07801 526 711