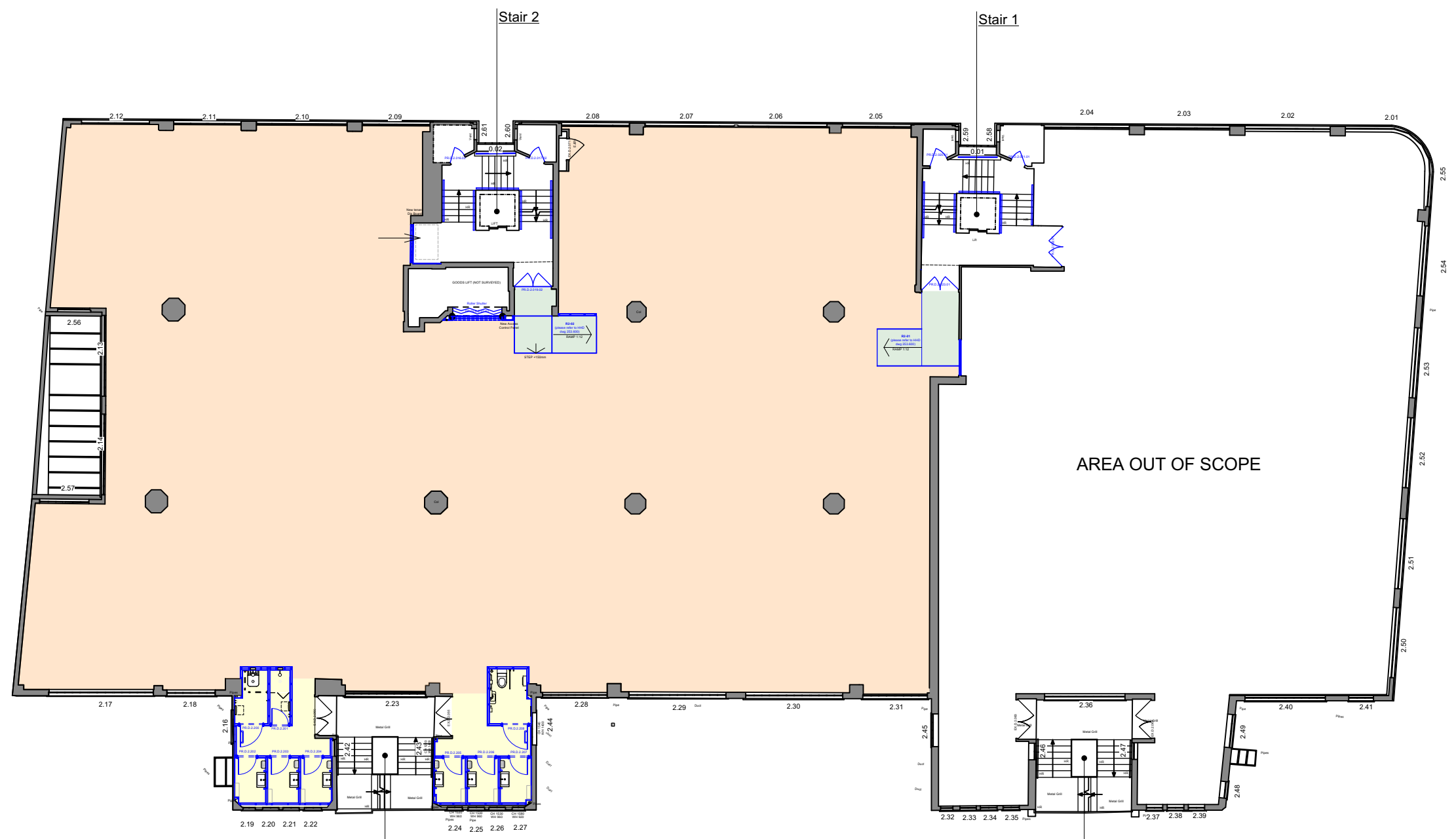


Site Measurements not to be taken from drawings.
Contractor to confirm all dimensions.
HHD not liable for seeking relevant planning authority permissions (including LBC) unless specifically directed by the client

Note: HHD cannot accept responsibility for the accuracy of the NIA represented on these drawing as they are prepared from the base survey drawings provided by others

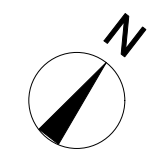


Stair 3

Stair 4

Key to Level 2:	Sq. Ft:	Sq. M:
NIA open plan office area:	7,842.57	728.51
NIA WC & Showers (inc circulation)	410.57	38.14
NIA Internal Ramps	151.53	13.45
TOTAL	8,404.67	780.10

NIA 2nd Floor GA
Shropshire House
1:200 @ A3



-	05/09.22	First Issue	CMD
No.	Date	Revisions / Submissions	Revised by



Design Firm
HamburyHird Design Ltd.
50-52 Wellsway
Bath
BA2 4SA
Telephone: 01225 336004

Stage
TENDER

Project Title
Shropshire House
11-20 Capper Street
London.WC1E 6JA

Drawing Title
NIA 2nd Floor GA

Project Manager	RH	Project ID	253
Drawn By	CMD	CAD File Name	253.102 (A) Proposed 2nd Floor Series- Shropshire House.vwx
Reviewed By	RH	Drawing No.	253.102.10
Date	May 2022		
Scale	1:200 @ A3		