

preliminary details

265 tottenham court road, w1

c. 5,788 sq ft - fully fitted

for rent



description

this stylishly designed floor benefits from high ceilings with exposed features throughout.

location

the building is situated on the west side of tottenham court road close to the junction with new oxford street and right by the tottenham court road underground station (elizabeth, central and northern lines)

PILCHER LONDON



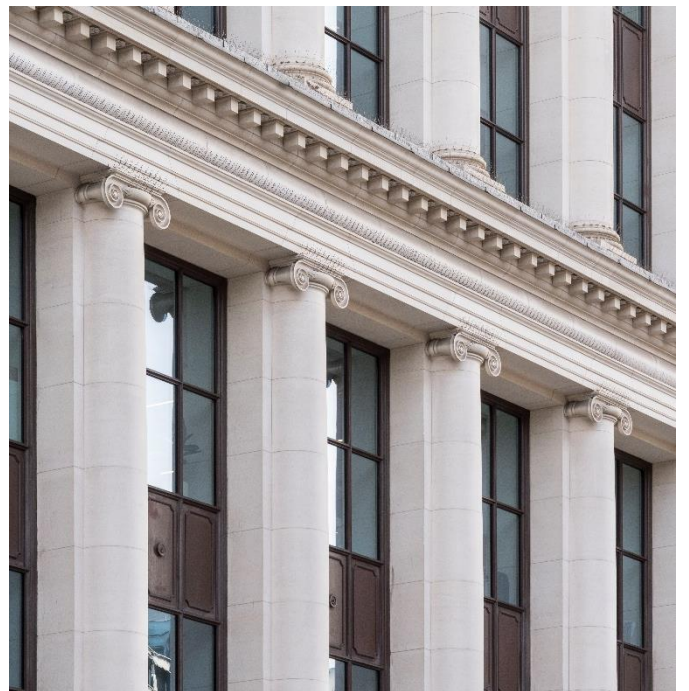
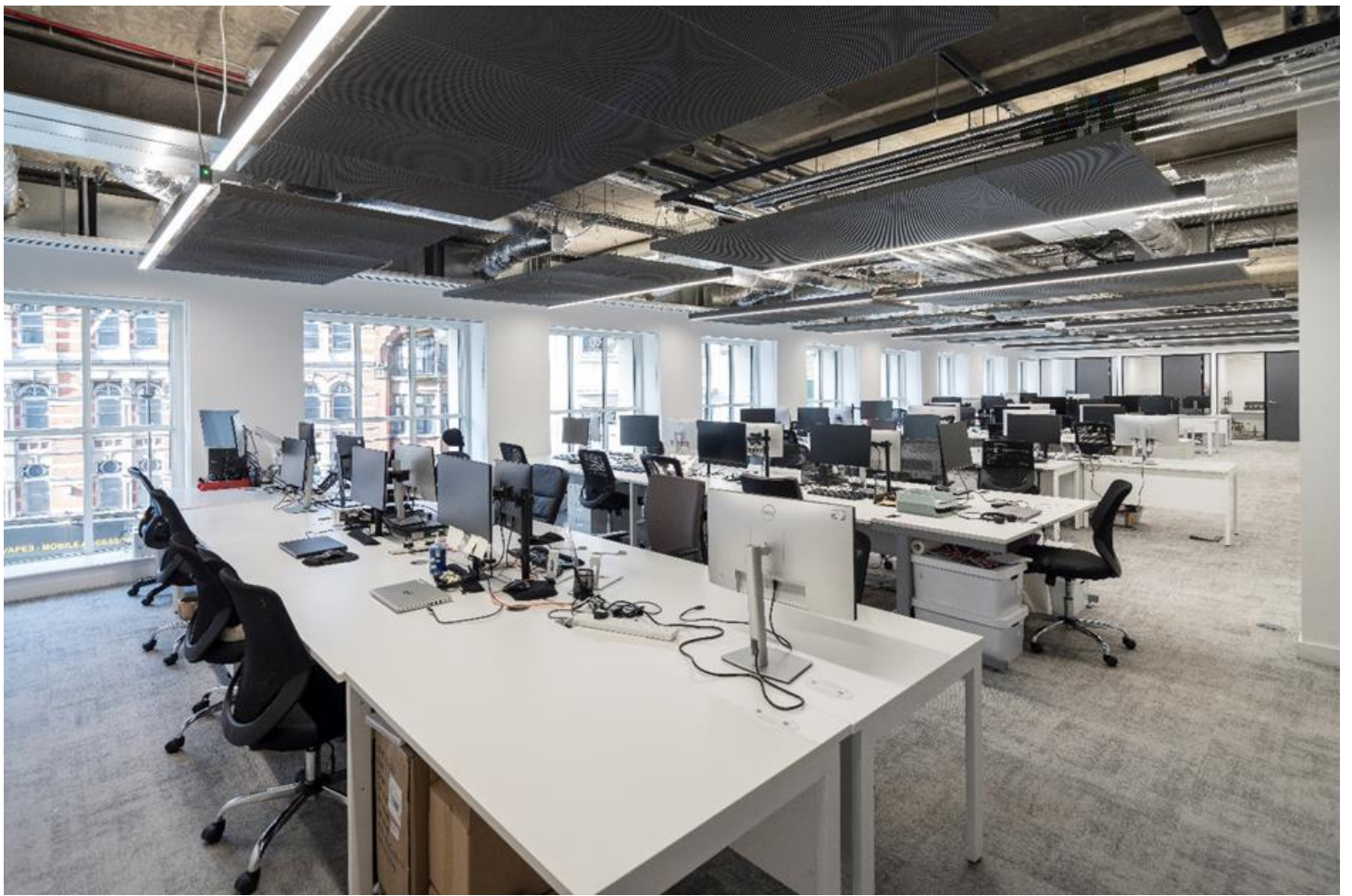
PILCHER

8600



27399

TELEPHONE





floor areas

2nd floor – 5,788 sq ft approx

amenities

- excellent natural lights
- generous floor to ceiling height
- fully fitted with 61 workstations
- 3 x executive offices
- 5 x internal meeting rooms
- kitchenette, collab and breakout space
- exposed air conditioning
- lift
- end of trip facilities
- concierge

lease

either an assignment of our clients lease for a term expiring x september 2026, alternatively a sub lease until 1st august 2026 outside the 1954 landlord and tenant act.

rent

£70 psf per annum exclusive

legal costs

each party to bear their own

viewings via joint sole agents

pilcher london

020 7399 8600

simon rinder

simonrinder@pilcher.london

07734 488 286

james faustino

jamesfaustino@pilcher.london

07834 789 346

albany

020 3691 1613

sam arghebant / brad sharp