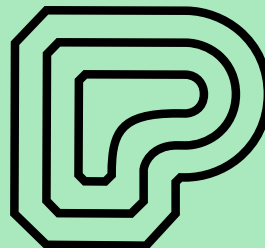




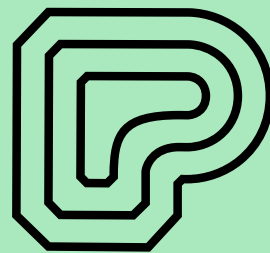
THE
PIANO
FACTORY



x,xxx sqft / x,xxx sq m



THE
PIANO
FACTORY



x,xxx sqft / x,xxx sq m



- 1. Image Title
- 2. Image Title



STRIKING WAREHOUSE CONVERSION WITH ORIGINAL INDUSTRIAL FEATURES

18,000 sq ft of offices to let, set within an industrial-chic style warehouse conversion, located within close proximity of Kentish Town West and Kentish Town stations.

SPECIFICATION

-  Air Conditioning
-  Lift
-  Showers
-  Cycle Facilities
-  Terrace
-  Raised Floors
-  Ground Floor Meeting Rooms
-  



FORMER PIANO FACTORY BENEFITTING FROM VOLUME, LIGHT & CHARACTER

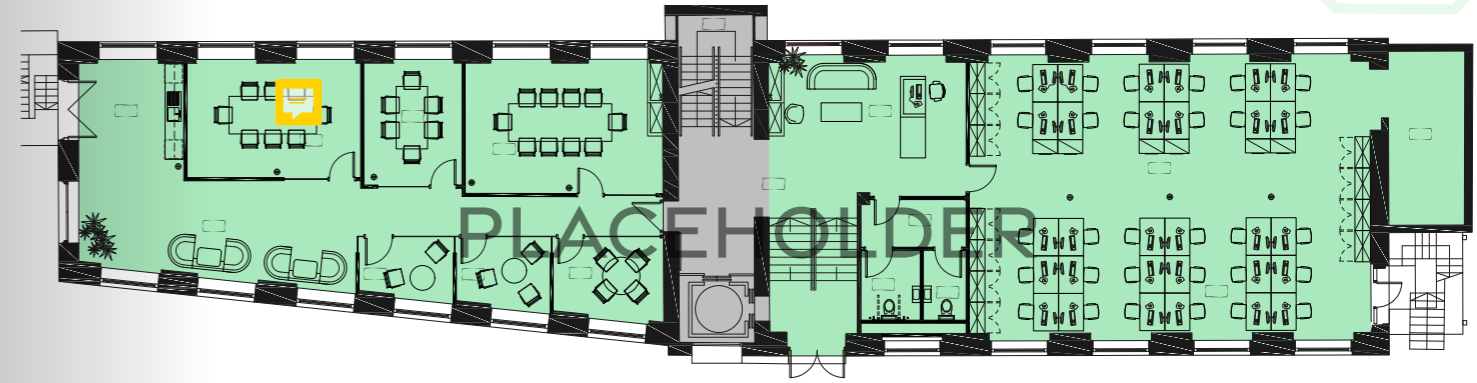


Lorum ipsum pid quatiis
nust, con rem vero explabo
porectus ium imus harit,
nesedigenis mos sequi
andit a di ipsam aut con
rem vero imus facia.



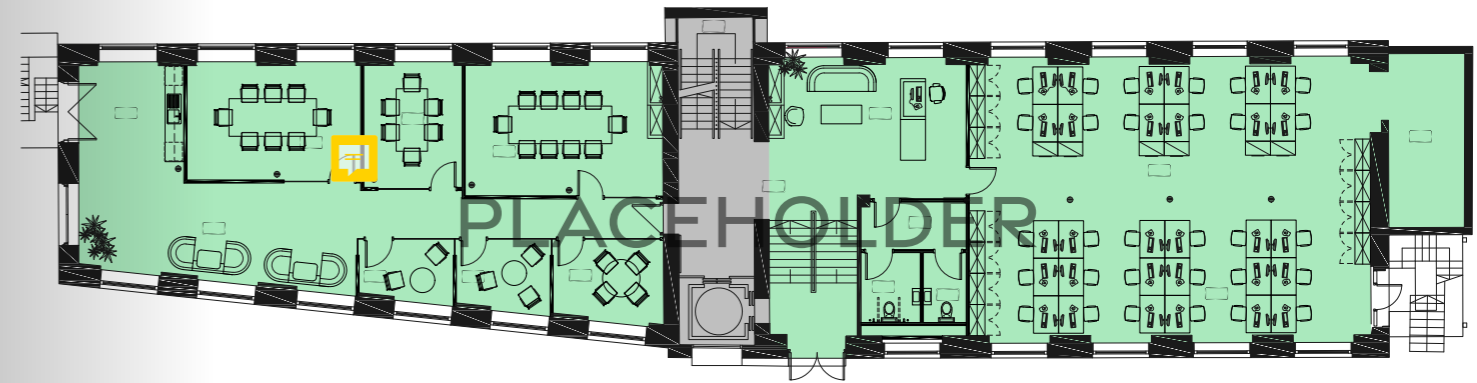
4TH FLOOR

X,XXX sq ft | XXX sq m



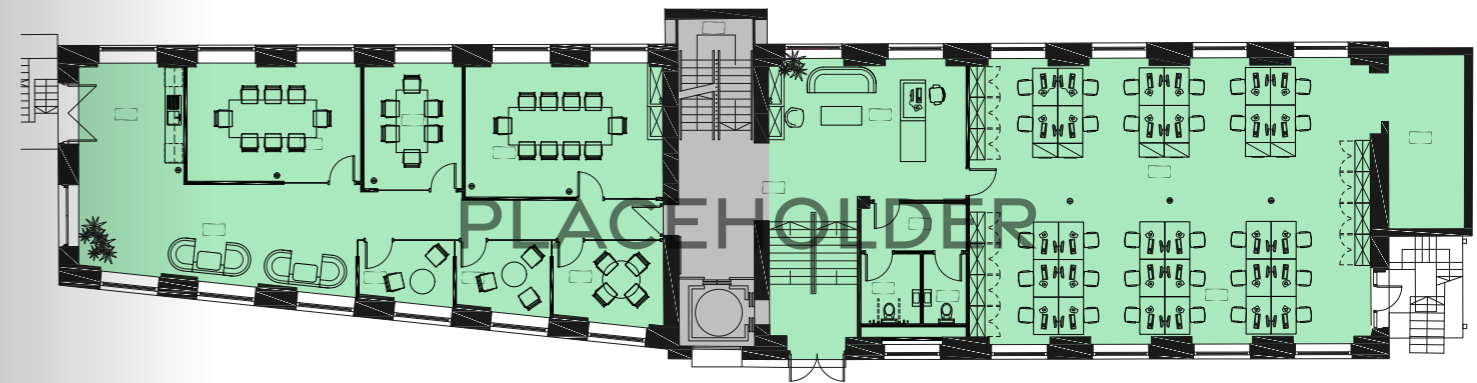
TYPICAL UPPER

X,XXX sq ft | XXX sq m



GROUND FLOOR

X,XXX sq ft | XXX sq m





PLACEHOLDER



PLACEHOLDER LONDON OVERVIEW MAP

IN THE HEART OF KENTISH TOWN, ONE OF LONDON'S MOST VIBRANT AREAS.



PLACEHOLDER



PLACEHOLDER

- 1. Image Title
- 2. Image Title
- 3. Image Title
- 4. Image Title



PLACEHOLDER



PLACEHOLDER

DRINK



- 1. Test
- 2. Test
- 3. Test
- 4. Test
- 5. Test

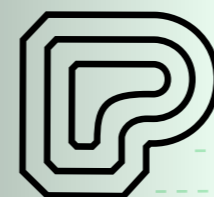
DINE

- 1. Test
- 2. Test
- 3. Test
- 4. Test
- 5. Test

UNWIND

- 1. Test
- 2. Test
- 3. Test
- 4. Test
- 5. Test

TRAVEL TIMES



- 10 mins
- 15 mins
- 20 mins
- 25 mins
- 25 mins



- Kings Cross
- Tottenham Court Road
- Waterloo
- Dalston Junction
- Shepherd's Bush





PLACEHOLDER

THEPIANOFACORY.CO.UK

savills

PILCHER ● LONDON

BRIAN ALLEN

T: +44 (0)20 7409 8778

M: +44 (0)7972 000 215

E: bmallen@savills.com

SIMON RINDER

T: +44 (0)20 7399 8611

M: +44 (0)7734 488 286

E: simonrinder@pilcher.london

ANDREW WEDDERSPOON

T: +44 (0)20 7409 8706

M: +44 (0)7807 999 363

E: awedderspoon@savills.com

