

## preliminary details

stylishly designed new mews building with landscaped courtyard  
floor to ceiling heights of 4.8m  
of interest to all media + creative businesses

**45 holmes road**  
**kentish town, nw5**

840 – 3,736 sq ft approx available



## location

holmes road is located within easy walking distance to kentish town underground station (northern line + thameslink connections) with the vibrant area surrounded by a number of bars & restaurants including joes kitchen, franco manca, the chicken shop and the forum, to name but a few

PILCHER LONDON

8600



207399

TELEPHONE



PILCHER LONDON

8600

207399

TELEPHONE

17 SAVILE ROW LONDON W1S 3PN T 020 7399 8600 www.pilcher.london

Misrepresentation Act. These descriptions and measurements do not form part of any contract and whilst every effort has been made to ensure accuracy this cannot be guaranteed.

## amenities

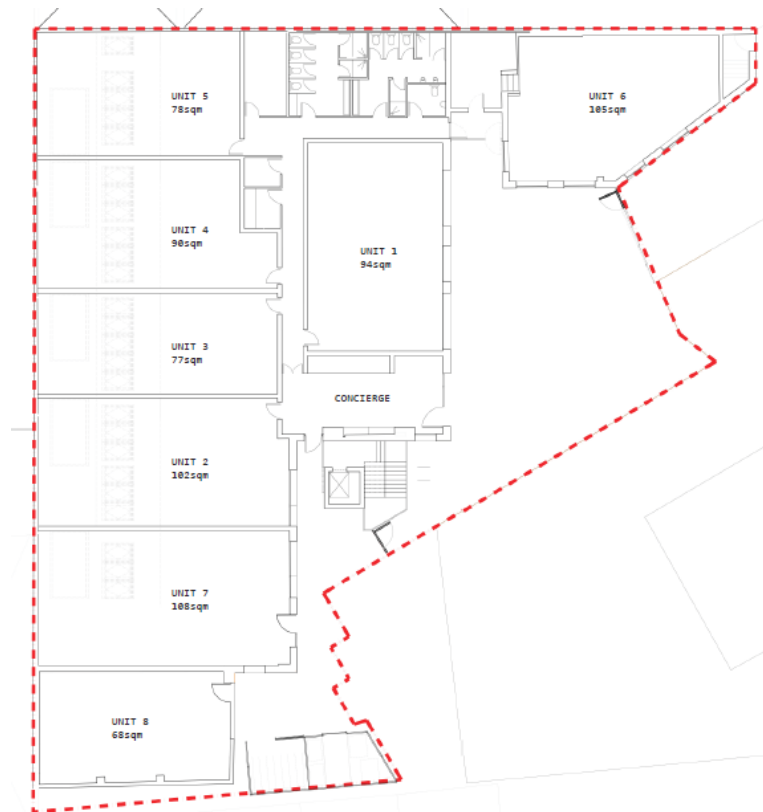
- 4.8m ceilings heights
- air conditioning
- 24-hour management
- access 24/7/365
- new building
- abundance of natural light
- hotel style concierge reception & w/c's
- bike storage
- showers
- architecturally designed
- gated landscaped courtyard
- units designed to include mezzanine floor, if required by tenant.

## terms

upon application

## accommodation

unit 2	1,098 sq ft
unit 3	829 sq ft
unit 4	969 sq ft
unit 5	840 sq ft
<hr/>	
total	3,736 sq ft



## viewing

please contact joint sole agents;

pilcher london  
julian wogman/ simon rinder  
020 7399 8600

forest real estate  
zach forest  
020 3355 1555

PILCHER LONDON

020 7399 8600

TELEPHONE