

7A

7A HOWICK PLACE
SW1

7A HOWICK PLACE
SW1

7A HOWICK PLACE
SW1

More of an EXPERIENCE than an office space

7AHOWICKPLACE.COM

7AHOWICKPLACE.COM

UNEXPECTED

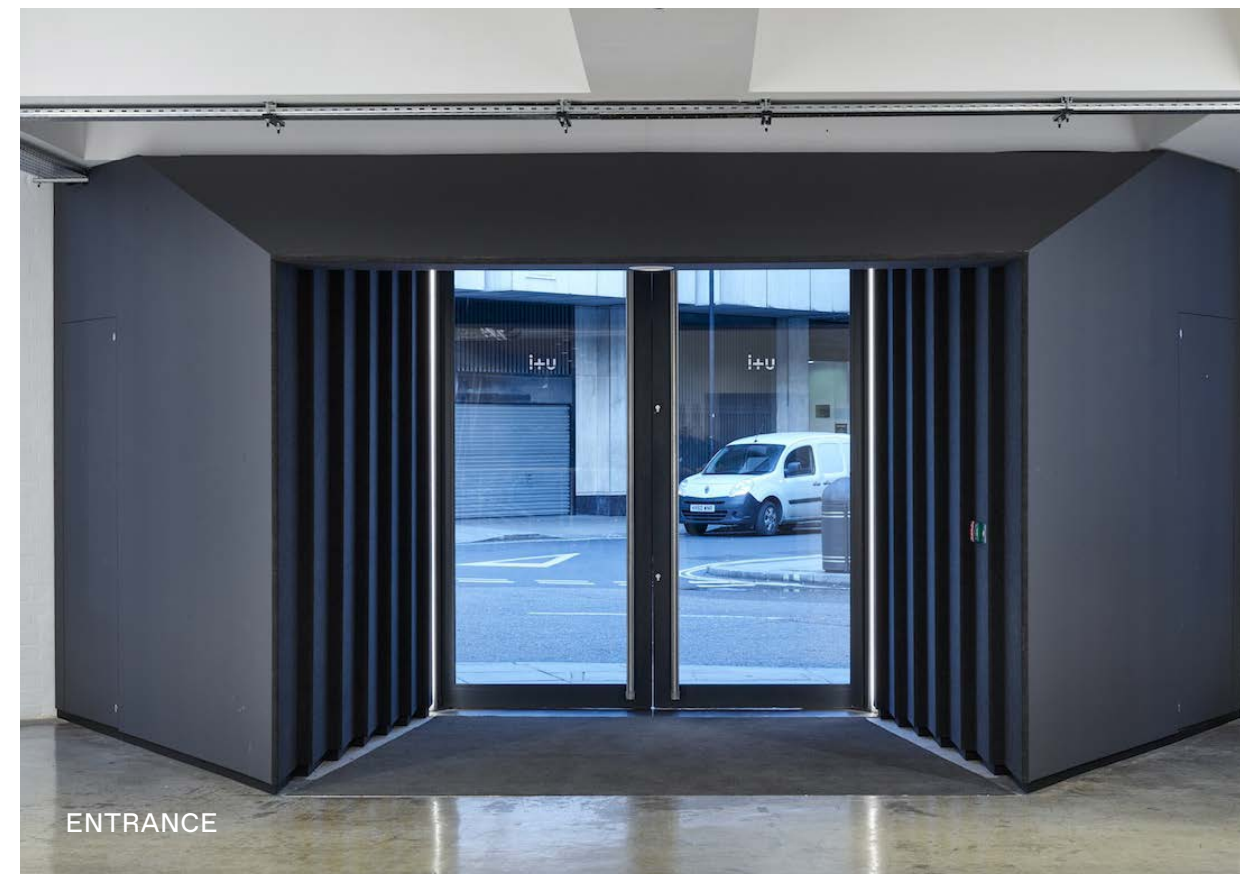
SPACE

Up to 31,105 sq ft of unique,
award-winning space filled with
LIGHT, DRAMA and STORY.

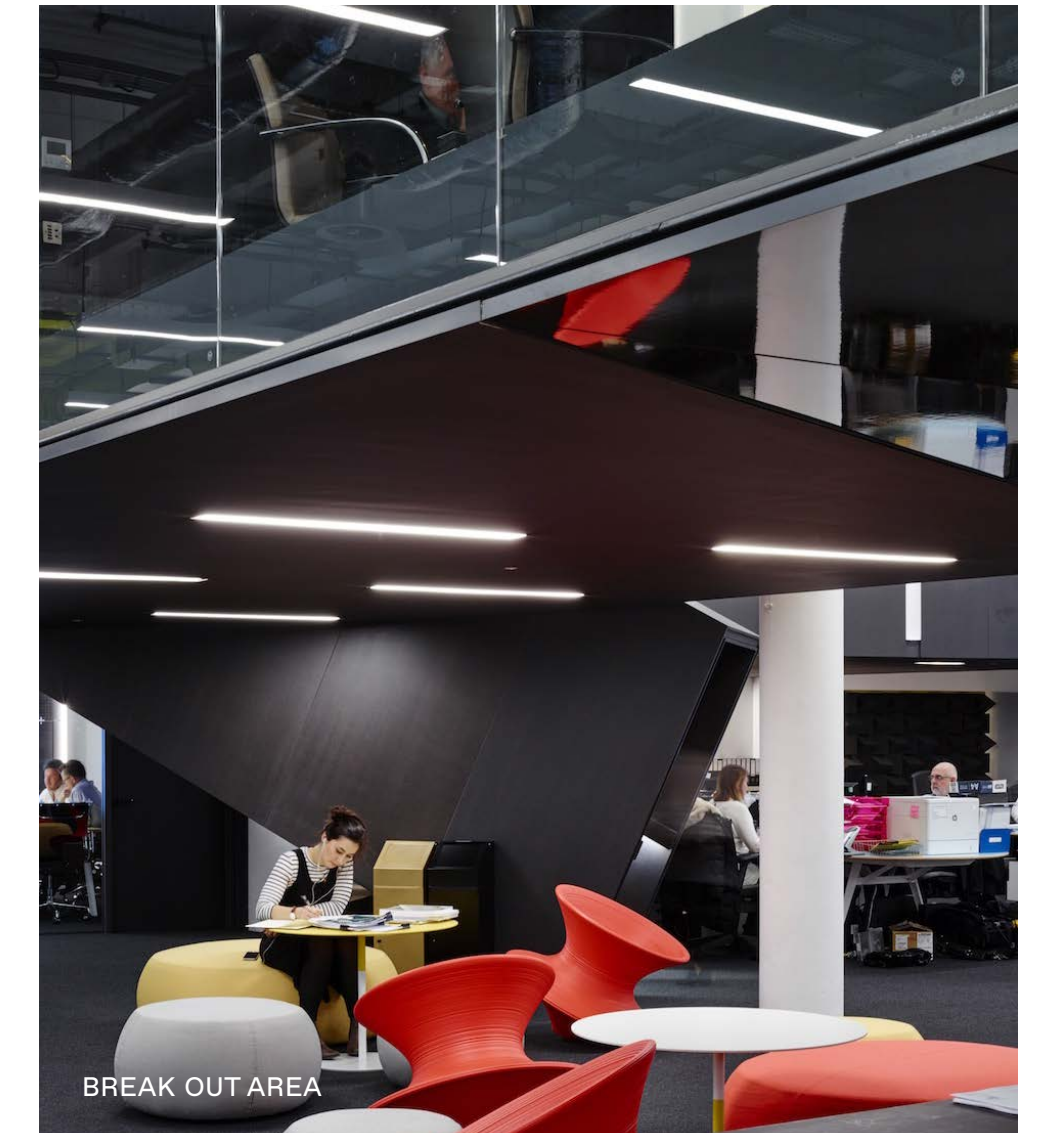
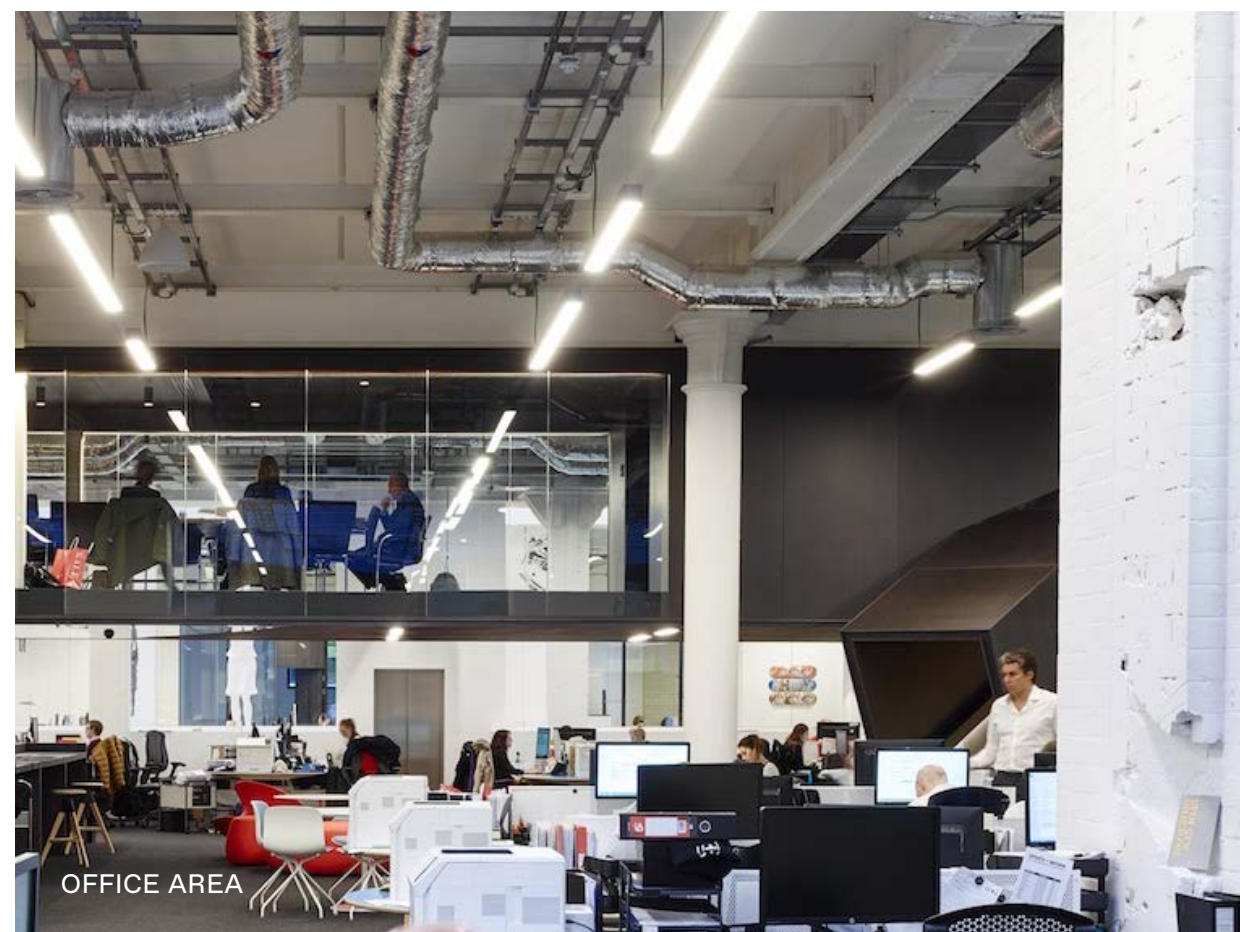
UNEXPECTED

EXPERIENCE

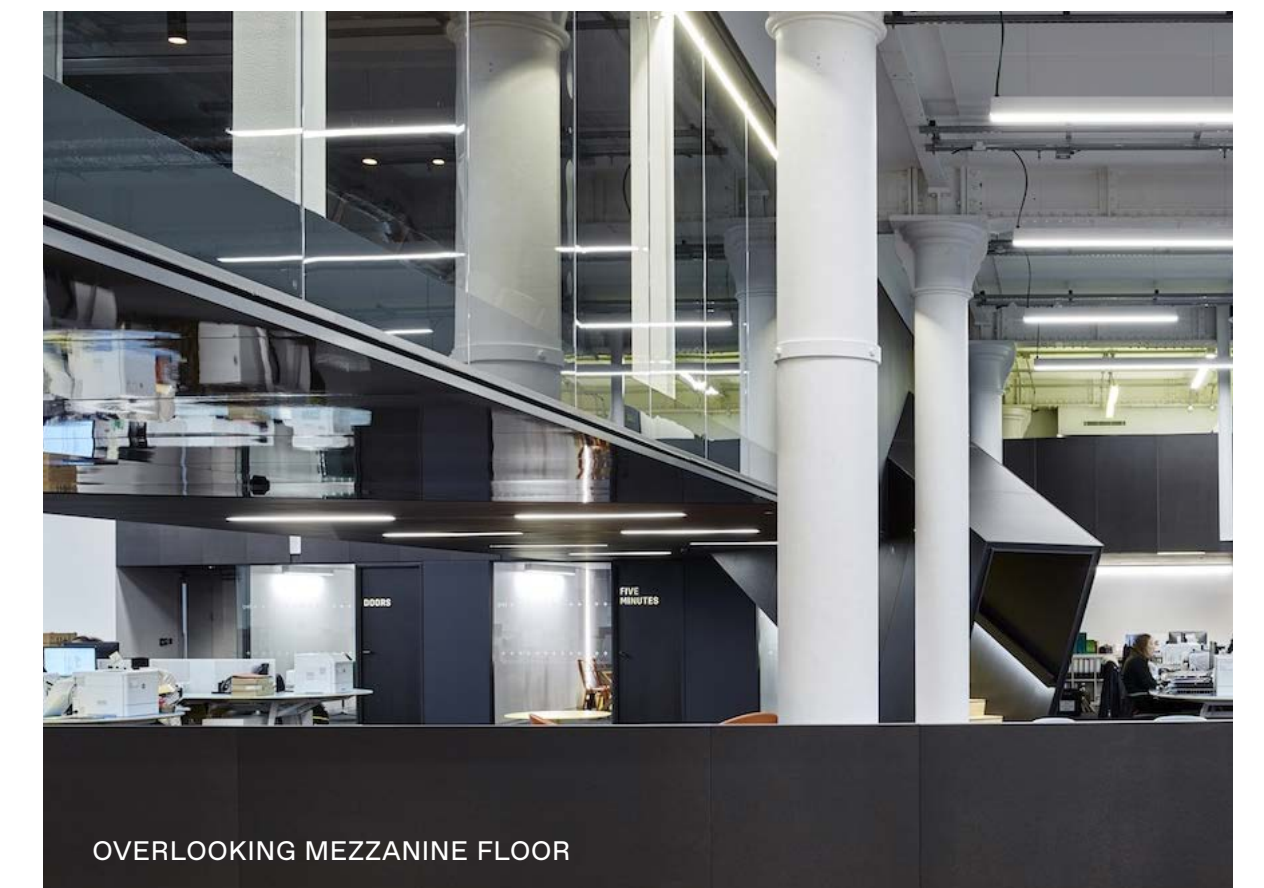
A natural home for brand EXPERIENCE,
a place to grow with a unique CULTURE.



UNEXPECTED



INSPIRATION



MEZZANINE MEETING ROOM

UNEXPECTED

LIGHT

FIRST FLOOR SIDE STAIRCASE

UNEXPECTED

LOCATION

A million miles away from the expected,
only moments from VICTORIA.



DESIGN FOCUSED

DESK SPACE

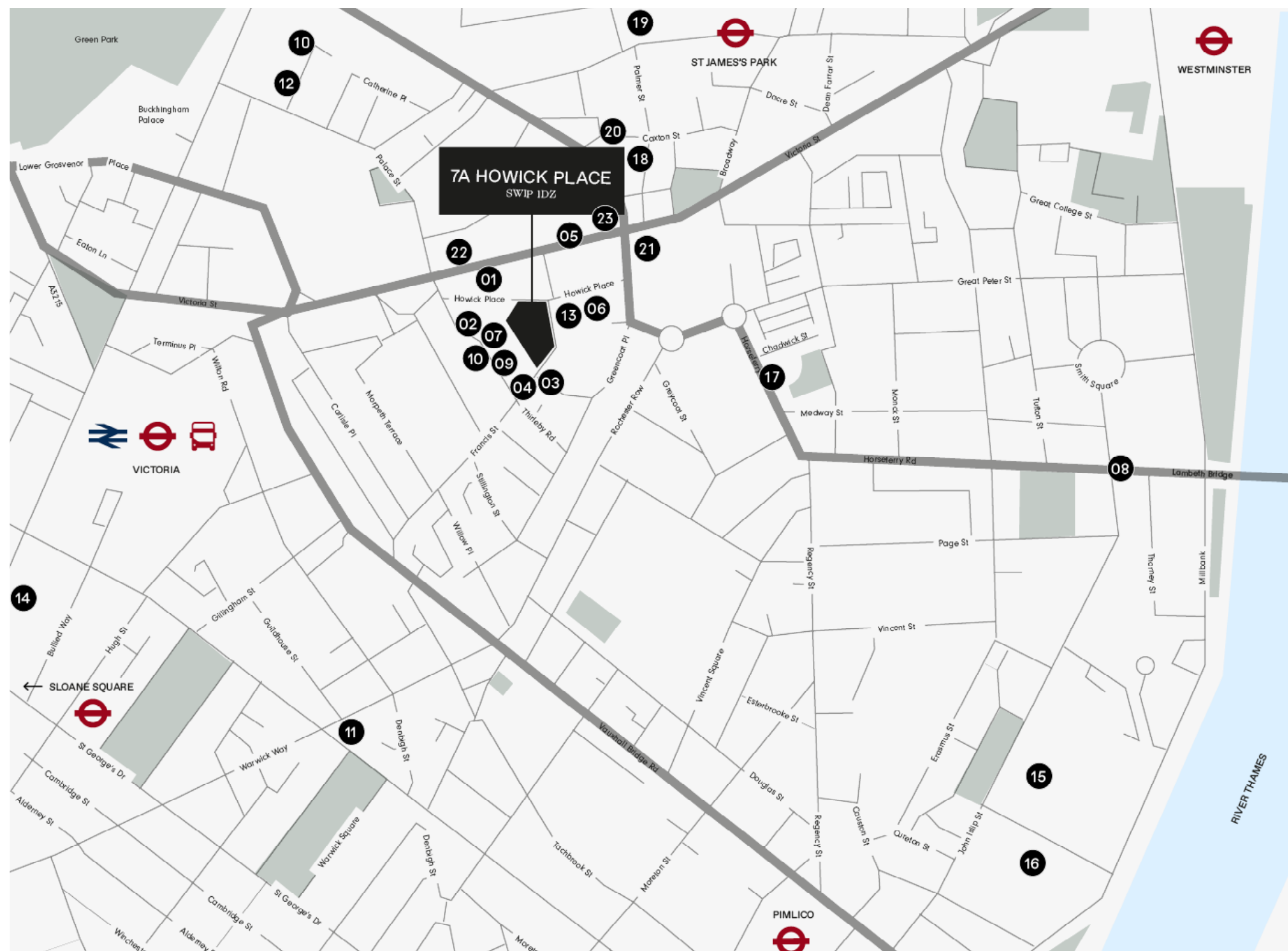


STORAGE SPACE

HIGH QUALITY FIT-OUT

7A HOWICK PLACE
SW1

AT THE CENTRE OF ONE
OF LONDON'S MOST
DYNAMIC BRAND AND
BUSINESS DISTRICTS



7AHOWICKPLACE.COM

⁰¹ JIMMY CHOO

⁰² TOM FORD

⁰³ MARTIN KEMP DESIGN

⁰⁴ FIONA BARRATT INTERIORS

⁰⁵ KERING

⁰⁶ DESIGN JUNCTION

⁰⁷ 1508 LONDON

⁰⁸ BURBERRY HQ

⁰⁹ NEWSON MARC LTD

¹⁰ DELFINA FOUNDATION

¹¹ LONDON CONTEMPORARY ART

¹² THE FOUNDATION GALLERY

¹³ GIORGIO ARMANI

¹⁴ GOOGLE 123 ACADEMY

¹⁵ TATE PUBLISHING

¹⁶ CHELSEA COLLEGE OF ARTS

¹⁷ 4CREATIVE

¹⁸ ROLLS ROYCE

¹⁹ RESOLUTION LIFE

²⁰ NOVALPINA

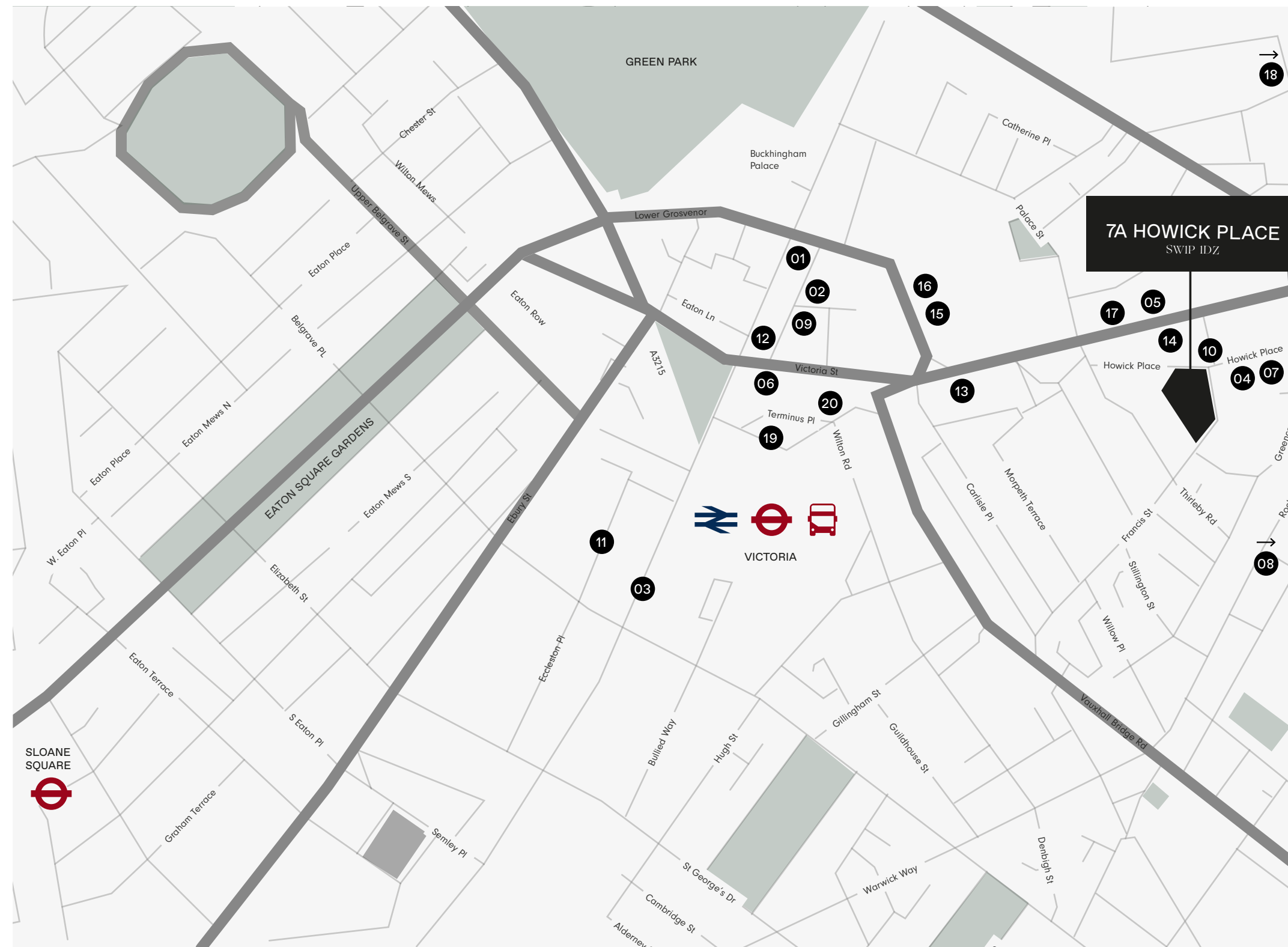
²¹ EDELMAN

²² JUPITER ASSET MANAGEMENT

²³ SCHLUMBERGER

7A HOWICK PLACE
SW1

SURROUNDED BY THE BEST OF LONDON'S CULTURE, COFFEE AND CONVENIENCE



7AHOWICKPLACE.COM

01



07



08



11



06



05



17



09



04



01 TIMMY GREEN
02 RAIL HOUSE CAFE
03 VICTORIA PLACE
04 DESIGN JUNCTION
05 THE IVY VICTORIA
06 MARKET HALL VICTORIA
07 IRIS & JUNE
08 REGENCY CAFE, EST. 1946
09 STICKS'N'SUSHI
10 GYMBOX

11 BARRYS BOOT CAMP
12 PRET A MANGER
13 JOHN LEWIS
14 BOOTS
15 MARKS AND SPENCERS
16 WAGAMAMAS
17 JOE & THE JUICE
18 BUCKINGHAM ARMS
19 TERMINUS PLACE
20 HERMANOS COFFEE

TOTALLY CONNECTED

7

MINUTES

WALK FROM 7A HOWICK PLACE
TO GREEN PARK
UNDERGROUND STATION

9

MINUTES

TO KING'S CROSS
FROM VICTORIA
UNDERGROUND STATION

12

MINUTES

TO BANK FROM
ST JAMES'S PARK
UNDERGROUND STATION

30

MINUTES

TO GATWICK AIRPORT
FROM VICTORIA
UNDERGROUND STATION

7A Howick Place is located
only a 5 minute walk from
Victoria Station, one of London's
best-connected commuter hubs,
allowing for easy access within
Central London and making
your team's commute effortless.

14

MINUTES

TO PADDINGTON
FROM VICTORIA
UNDERGROUND STATION

17

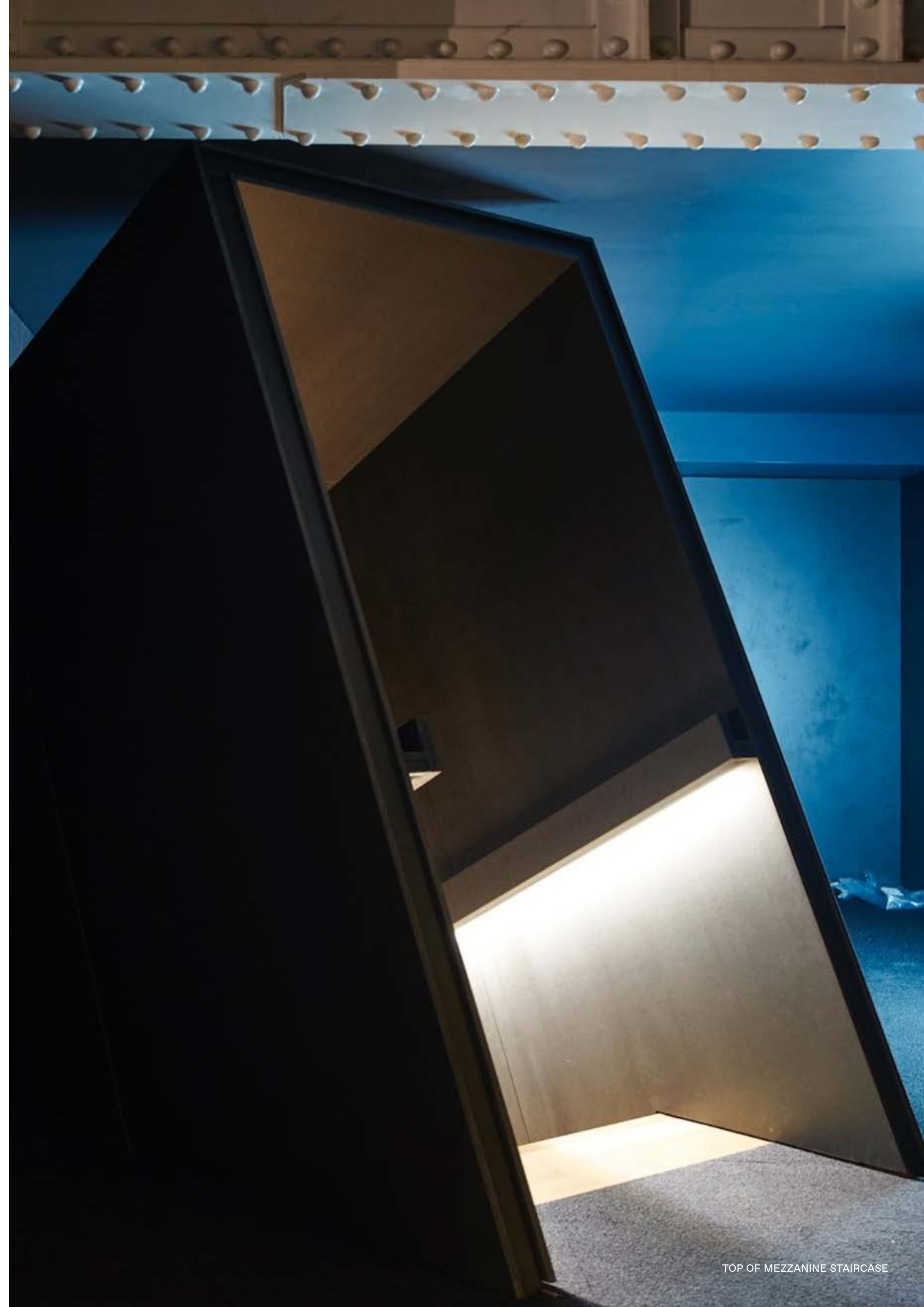
MINUTES

TO CANARY WHARF
FROM ST JAMES'S PARK
UNDERGROUND STATION

UNEXPECTED AND UNRIVALLED

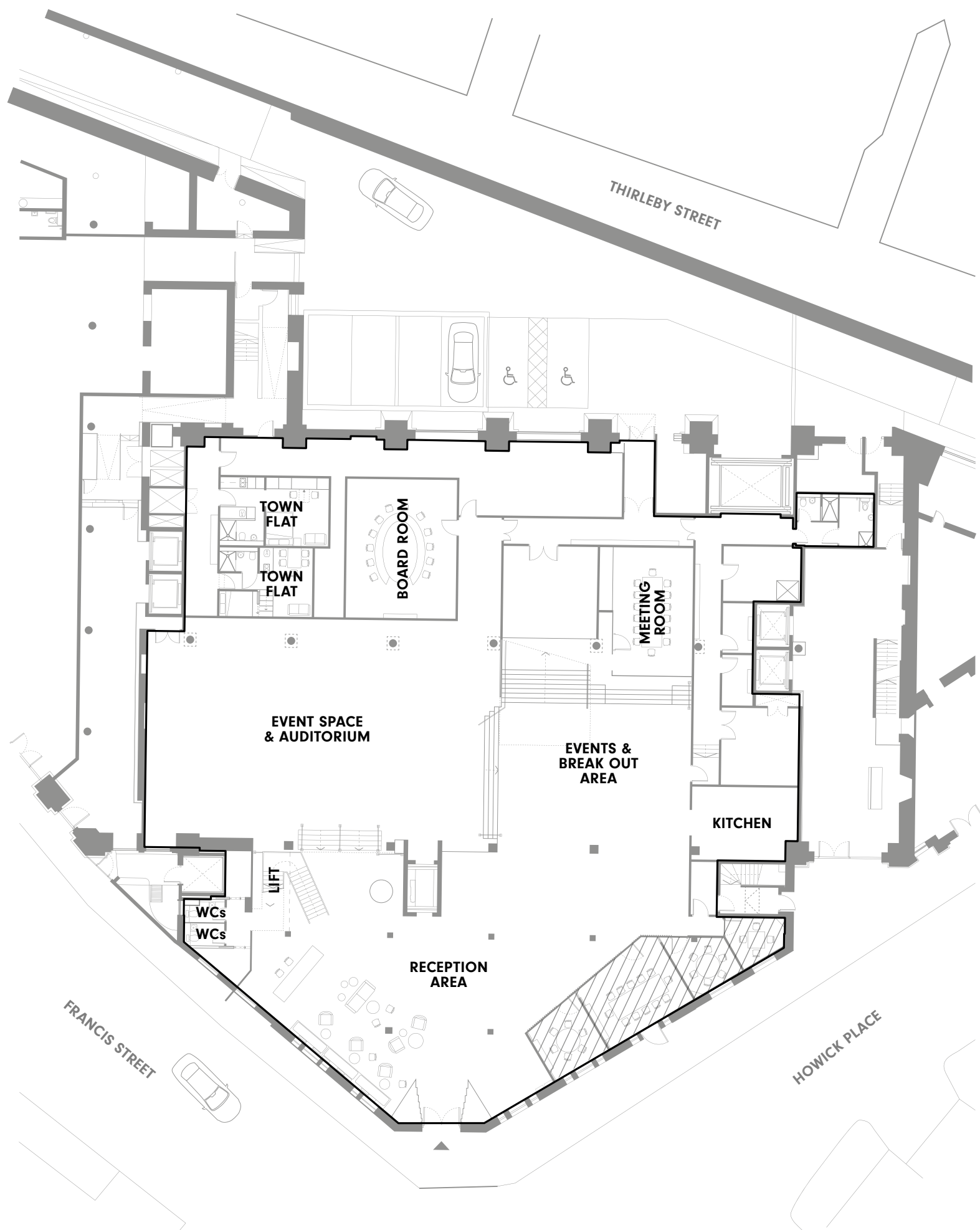
AWARD-WINNING OFFICE WITH HIGH QUALITY, DESIGN FOCUSED FIT-OUT

- + 31,105 sq ft versatile office space
- + On-street front door
- + Generous reception area
- + Auditorium and events space
- + 24/7, year-round access
- + Varied floor-to-ceiling heights (majority at minimum clear height of 4.2m)
- + 1:10 sq m occupational density
- + Passenger lift and separate goods lift
- + 10 dedicated meeting rooms
- + 24-person capacity boardroom
- + Cycle storage facilities
- + 14 superloo WCs
- + 2 showers and changing facilities with storage lockers
- + Fully-fitted kitchen facilities
- + BCO compliant lighting with fully addressable DALI controls
- + VRF air condition system
- + Fresh air within meeting rooms at 12.0L/s per person
- + Fresh air within office at 10.0L/s per person
- + Sonos audio system (fully-integrated, centrally-controlled and zoned)



FLOOR PLANS

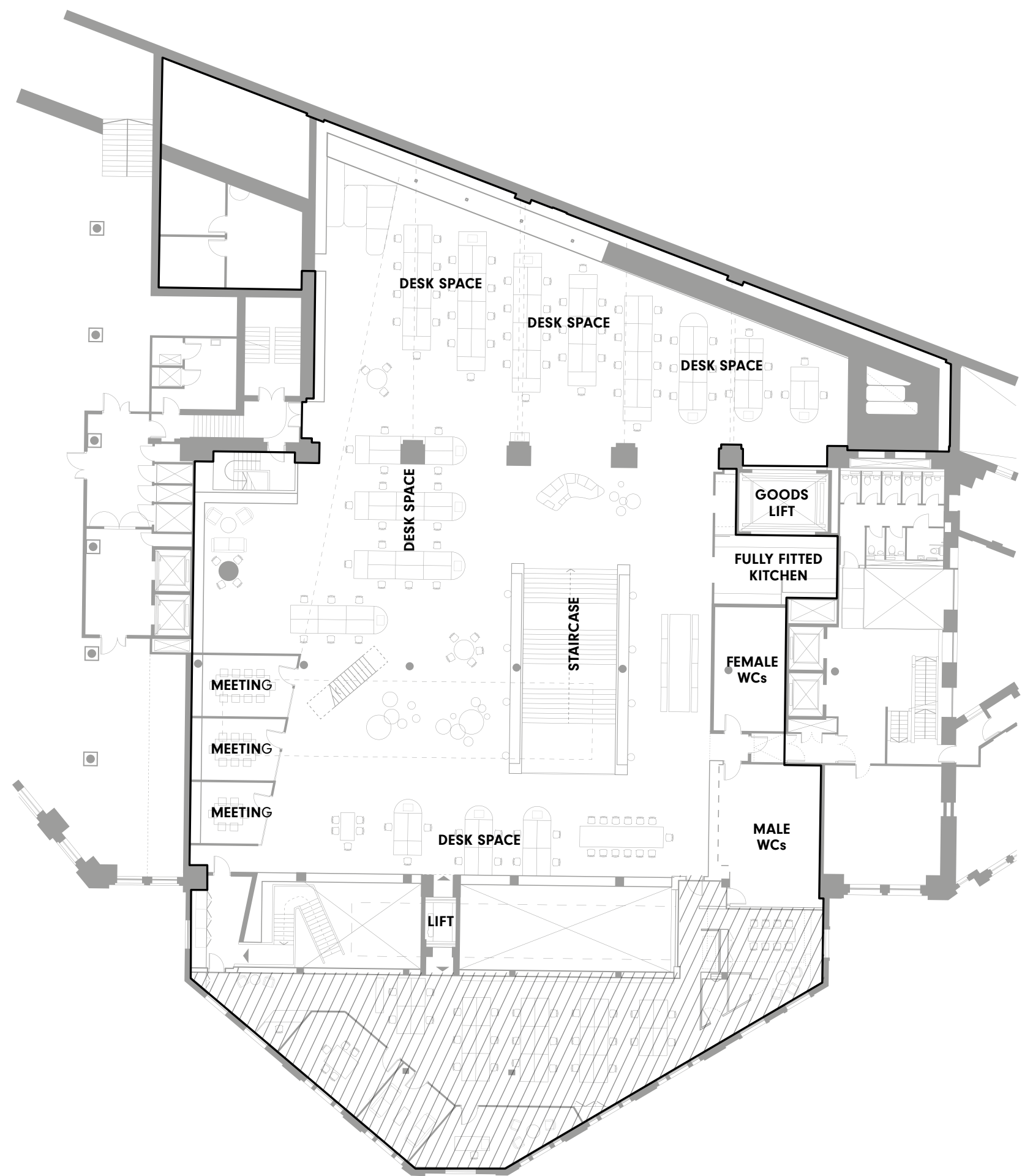
TOTAL: 31,105 SQ FT



GROUND FLOOR

FLOOR PLANS

TOTAL: 31,105 SQ FT

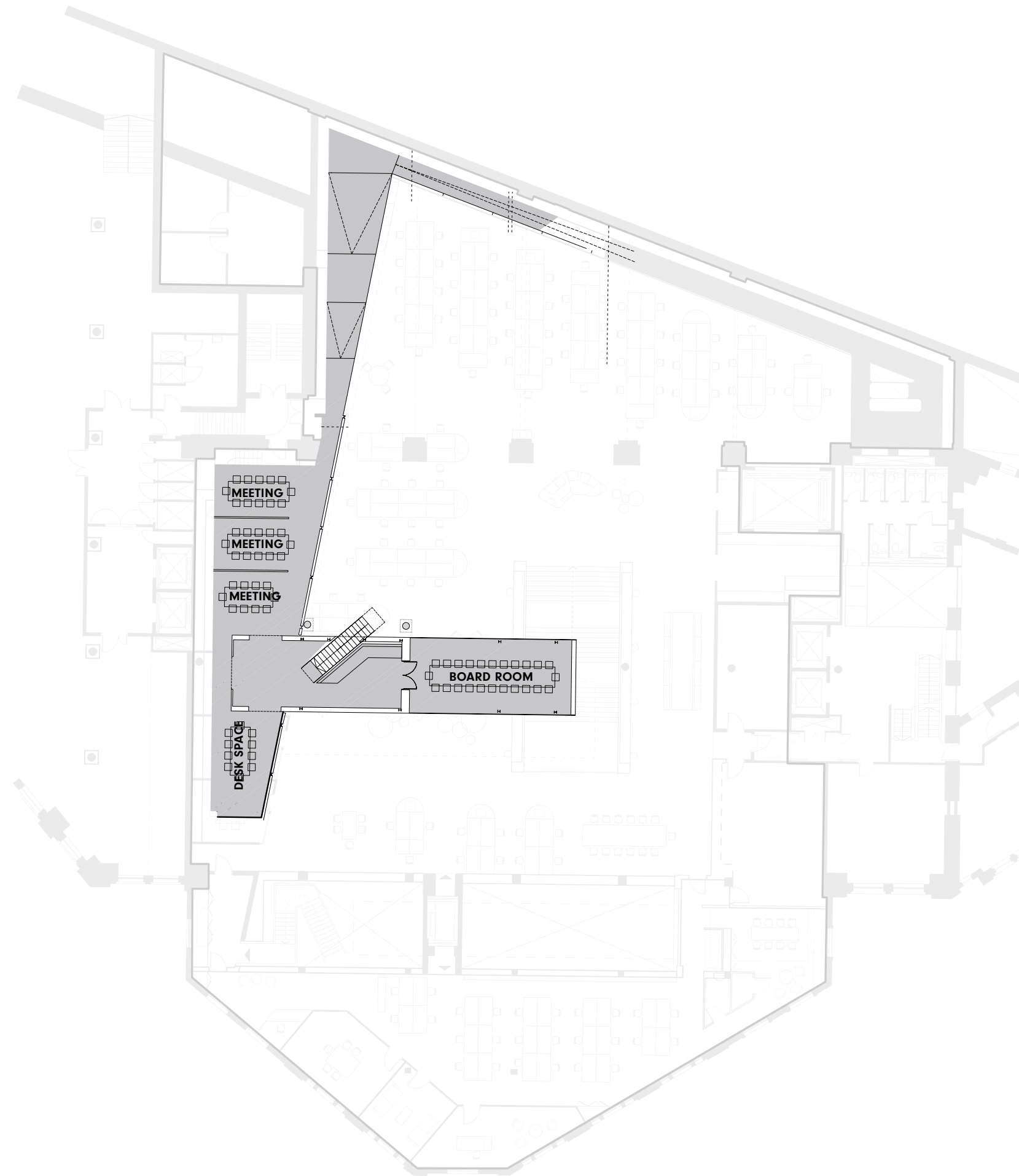


FIRST FLOOR

DESKS: 94

FLOOR PLANS

TOTAL: 31,105 SQ FT



MEZZANINE FLOOR



FOR FURTHER INFORMATION

The leasehold interest in 7A Howick Place is available by way of an assignment or sub-lease. The existing lease term expires 10th February 2025 and is granted within the Landlord & Tenant Act 1954.

3,477 sq ft is currently let to Realstar Group by way of sub-lease.
Further details can be provided upon request.

CONTACT

CBRE

JOE GIBBON	MATT CHICKEN	PHILLIP HOWELLS
JOSEPH.GIBBON@CBRE.COM	MATT.CHICKEN@CBRE.COM	PHILLIP.HOWELLS@CBRE.COM
+44 (0) 7585 987 546 +44 (0) 20 3257 6173	+44 (0) 7852 205 099 +44 (0) 20 7182 2023	+44 (0) 7836 223 161 +44 (0) 20 7182 2648

PILCHER●LONDON

DAVID JACKSON	JULIAN WOGMAN
DAVIDJACKSON@PILCHER.LONDON	JULIANWOGMAN@PILCHER.LONDON
+44 (0) 7801 415 957 +44 (0) 20 7399 8606	+44 (0) 7834 789 346 +44 (0) 20 7399 8602

7A HOWICK PLACE
SW1