

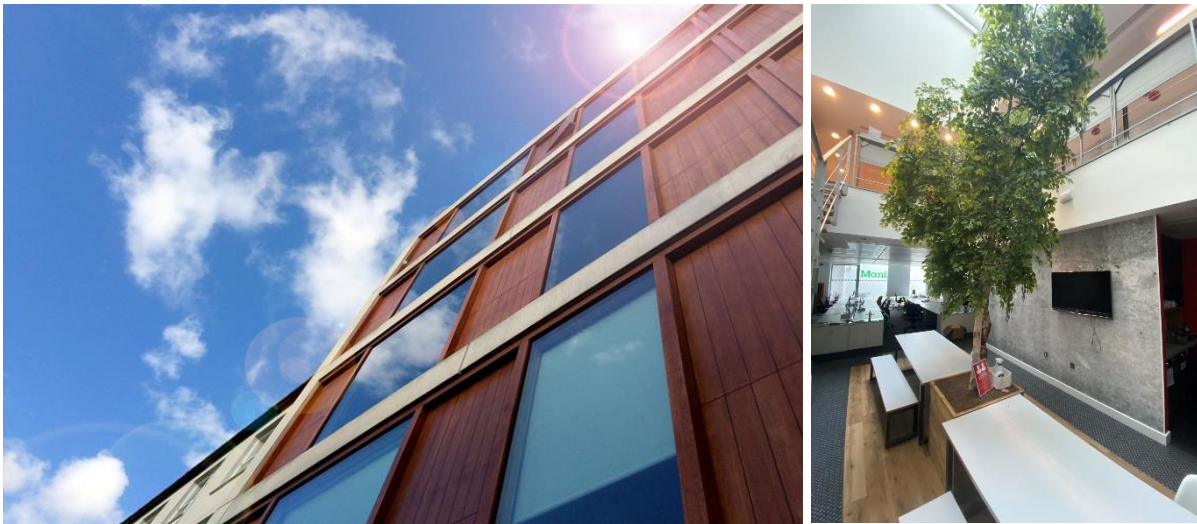
preliminary details
new instruction benefiting from volume,
light + style with its own entrance

designed by leading architects squire and partners

of particular interest to all creative occupiers

20 northdown street, kings cross, n1

5,453 sq ft approx for rent



Location

excellent transport links with kings cross station (victoria, hammersmith + city, circle, metropolitan, northern, piccadilly lines + thameslink)

PILCHER LONDON

8600



27399

TELEPHONE



accommodation

ground floor	2,621 sq ft
lower ground floor	2,832 sq ft
total	5,453 sq ft

amenities

- unique architecture
- excellent natural daylight
- kitchen
- wc`s + showers
- full height windows
- self-contained with own entrance
- lightwell and interconnecting stairs
- air conditioning

rent

upon application

lease

a new lease direct from the freeholder

viewing

strictly by prior arrangement via sole agents simon rinder / julian wogman

PILCHER LONDON

020 7399 8600

TELEPHONE