

fully fitted and ready-to-go

self-contained architecturally interesting space with stylish fitout in place

14 rosebery avenue, clerkenwell, ec1

6,600 sq ft

flexible lease term until july 2022



description

an architecturally interesting space with double entrance and fully fitted for immediate occupation.

this impressive unit features double heights spaces, reception area, various meeting rooms and areas of open plan desking.

the building is located moments from farringdon station (thameslink services, circle, metropolitan and hammersmith & city line) and chancery lane station (central line) both within 5-10 minutes walking distance.

HERSHMAN



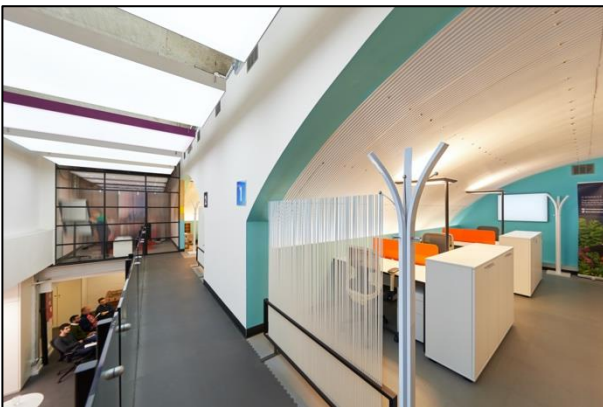
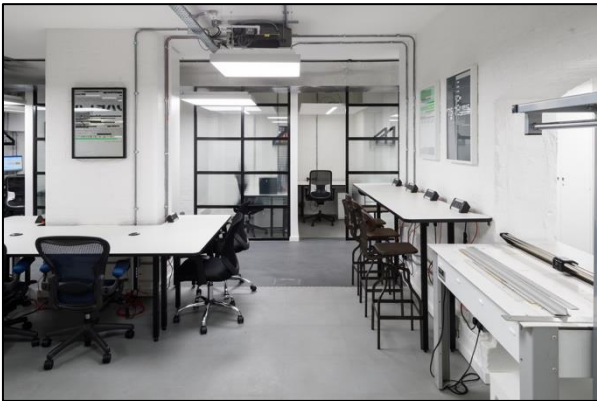
PILCHER


8600



27399

TELEPHONE



PILCHER  HERSHMAN

8 6 0 0

 2 7 3 9 9

TELEPHONE

amenities

- self-contained
- fully fitted and ready-to-go
- impressive architectural spaces
- air cooling/ heating
- double entrance
- w/c's + shower
- smart building reception
- close to transport links

fitout including

- desking, task chairs, storage, desk dividers, tabletop power & data.
- private w/c's + shower
- meeting rooms
- fitted kitchens
- data cabling in place
- suspended lighting and acoustic pannels
- breakout spaces

rent

quoting £35 psf pax as seen

accommodation

upper ground	3,000 sq ft
Mezzanine	1,500 sq ft
ground floor	2,200 sq ft
<hr/> total	<hr/> 6,600 sq ft

lease

a new flexible lease for a term until july 2022

viewing

please contact joint sole agents

pilcher hershman

julian wogman/ david jackson
julianwogman@pilcherhershman.co.uk
07834 789 346/ 07801 415 957

or

colliers international

020 7101 2020

HERSHMAN



PILCHER

8600



7399

TELEPHONE